

# Technical Onboarding for ccTLD v1.0.1

May 2021

[Start here →](#)



## Content

Welcome .....	3
Overview .....	3
1. Customer Service Portal Account.....	3
2. General Information .....	3
3. PGP Key .....	4
4. SSH Keys.....	4
5. Deposit Upload .....	5
5.1. Deposit preparation .....	5
5.2. Deposit upload to DENIC Services SFTP server .....	5
6. Onboarding complete .....	6
I - Contact and Support.....	7

## Welcome

Welcome to our Data Escrow Service. We are DENIC Services, a fully owned subsidiary of DENIC eG and rely on 20 years of experience in Internet technology.

As a Designated Escrow Agent for ICANN accredited Registrars and Approved Escrow Agent for gTLD Registries we fulfil all specifications. We are fully GDPR compliant, ISO certified for information security and business continuity management. Further our Data Escrow Service won the eco://award for innovation in domain name business.

## Overview

This manual describes the onboarding process to our system through our Customer Service Portal. This is the second part, technical onboarding.

During the onboarding process you will always have the menu on the left side with the next steps. A completed step has a checkmark. All steps must be completed.

## 1. Customer Service Portal Account

Our main contact will receive an admin-account for our customer service portal. The credentials will be sent by mail as a one-time-link. By clicking on the link a password reset will be forced. This process is protected by a second factor through your provided mobile phone number. This is your master account which can add more users over the admin section described later. In any cases regarding the portal this account will be contacted.

## 2. General Information

The general information section consists of pages to prepare your account and the contract. Through three pages company information will be collected to prefill further forms.

Please only choose a Backend Operator (BERO) if you don't upload with your own account.

General Information	<input checked="" type="checkbox"/>
PGP Key	<input type="checkbox"/>
SSH Keys	<input type="checkbox"/>
Deposit Upload	<input type="checkbox"/>

### General Information

#### Welcome to Data Escrow by DENIC Services.

Thank you for submitting all general information. This step is completed.  
You may now continue completing the steps on the left menu.

### 3. PGP Key

Here you may provide us your public PGP key. The key needs to be valid. Your PGP key is necessary for uploading a deposit successfully. This step is completed by your Backend Operator (BERO) if you chose one.

General Information ☒  
**PGP Key** ☐  
SSH Keys ☐  
Deposit Upload ☐

#### PGP Key

Please provide us your public PGP key. The key needs to be valid. Your PGP key is necessary for uploading a deposit successfully.

PGP Key  
-----BEGIN PGP PUBLIC KEY BLOCK-----  
Version: BCPG C# v1.6.1.0  
  
mQENBGBlytABCACC32BgSE0fNjLktLFmj8dzlWzO17gD89kCWwf2MHvi4jhMcrHi  
LMGjHFtWTv/CBY8SE/C48DVYPmrwGrhHQDwrcwAMB18Cq9Mlw2XLkuAF79oLj7Lh  
xvktEWijwRx0+sdrYjUe3/RgBTDb6NSAFxDsYf8UDcrNnqBI/YLoTFyZLuzHAgZK  
HHYtNoLYyGsyKcCyhhKOBaEaMeMPggp1zViQukf69Ro7QMIZX5GjNvQ3u8EomKtXM  
PTB0aT51MGpOX2X1LzXSzdiZYqx+QReeO69yKLXupvALFWs4VMlayNuTr9/c1rz  
JfBNI3QvrrqUJJ1SFHgB5WfwpH+oGodl947PABEBAAAG0AikBHAQQAQIABgUCYXK  
0AAKCRABOaeCJo/lrT/3B/9ZX9RdqMQtNaqzZ3hTu9/L7f6qmkKaNMhaPKq+Ixc+  
4yJYjp51HEtbu9Hx2Pe4j/FUKvy8vyRCWf++1KM7Z74x/K69dlKr5b3oFGeqeilC  
-----END PGP PUBLIC KEY BLOCK-----

Save

For creating a PGP Key we recommend to use GnuPG:

- <https://gnupg.org> (Linux)
- <https://www.gpg4win.org> (Windows)

Validation period of at least 5 years and length 2048 Bit

#### Algorithms

RIPEMD160withRSA	SHA256withECDSA	SHA512withECDSA
RIPEMD160withECDSA	SHA384withDSA	SHA256withRSA
RIPEMD256withRSA	SHA384withECDSA	SHA384withRSA
SHA256withDSA	SHA512withDSA	SHA512withRSA

### 4. SSH Keys

Here you can add your public SSH key for logging in to our server. You may provide more than one key.

General Information ☒  
PGP Key ☒  
**SSH Keys** ☐  
Deposit Upload ☐

#### SSH Key

Please provide us your public SSH key(s). The key(s) need(s) to be valid. We support more than one key if you work with different keys on different servers.

+

ID	SSH Key	Edit
No key added		

You can use ssh-keygen at the command line for creating the SSH Key.

As an example: ssh-keygen -t rsa -b 4096

## 5. Deposit Upload

On this page you will find your login information as well as information about deposits, preparation and upload. Our manuals are also available for download. Please do not forget to check the checkbox, that you have read the manual.

General Information ☒  
PGP Key ☒  
SSH Keys ☒  
Deposit Upload ☐

### Deposit Upload

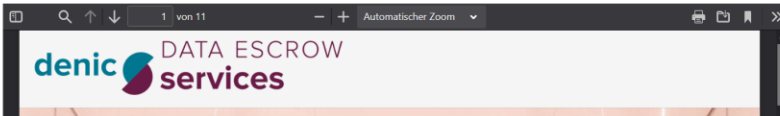
**Credentials for uploading to our SFTP server**

Please use the username and your SSH key to login to our SFTP server.

FQDN: **escrow.denic-services.de**

Username
HowToCtLD

☐ Manual has been read



### 5.1. Deposit preparation

Please prepare your deposit files according to the official ICANN specifications:

#### ICANN Registry Agreement

##### XML Schema by Arias & Noguchi (legacy) [11]

<https://tools.ietf.org/html/draft-arias-noguchi-registry-data-escrow-11>

<https://tools.ietf.org/html/draft-arias-noguchi-dnrd-objects-mapping-10>

##### XML Schema by IETF (latest) [00]

<https://tools.ietf.org/html/draft-ietf-regext-data-escrow-00>

<https://tools.ietf.org/html/draft-ietf-regext-dnrd-objects-mapping-00>

You have to use our public production key to encrypt the deposit:

DENIC Services RyDE public PGP Key.



### 5.2. Deposit upload to DENIC Services SFTP server

Please use the provided Login and your SSH Key for uploading to our SFTP server.

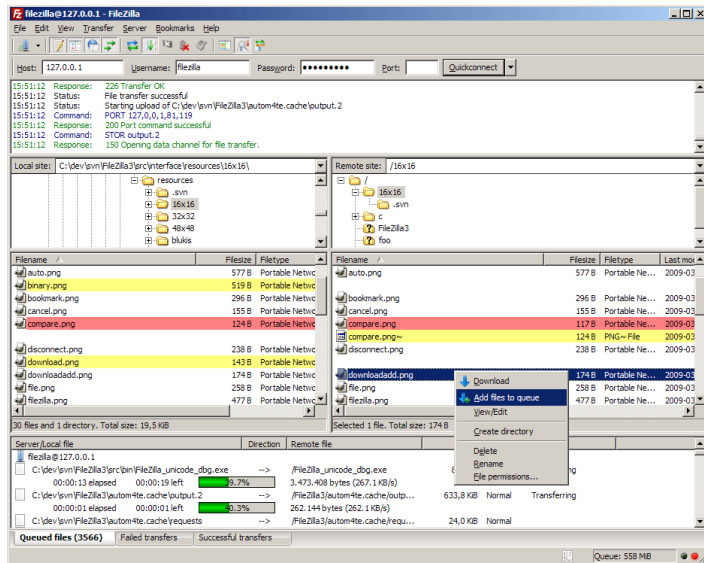
FQDN: escrow.denic-services.de

Login: e.g. RyDE-example

(provided in our Customer Service Portal)

You may use any SFTP application via terminal or client such as FileZilla:

FileZilla Project.



The number of simultaneous connections must be set to 1.

How to set it in FileZilla:

“Transfer Settings” → “Limit number of simultaneous connections” and set to 1.

## 6. Onboarding complete

After your successful upload to our system you can upload your deposits on a regular basis.

Congratulations!

Onboarding complete

## Thank you!

You have successfully completed the onboarding.

All of your information is saved in our systems and you are ready to start uploading your deposits.

For further questions please contact our Support: [escrow@denic-services.de](mailto:escrow@denic-services.de).

To access our Customer Service Portal, please click here:

[Enter Customer Service Portal](#)

## I - Contact and Support



**DENIC Services GmbH & Co. KG**  
Heinrich-Hertz-Str. 6  
64295 Darmstadt  
Germany



**Phone** +49-6151-62 92 710



**Fax** +49-6151-62 92 711



**E-Mail** [escrow@denic-services.de](mailto:escrow@denic-services.de)



**Internet** <https://www.denic-services.de/en>